

VISION FRONT



27/00
XXL
XL
L
M
S
XS

VISION FRONT WRAP
ALL SIZES

VISION FRONT SHELL
XS-S, M-XXL
RIGHT and LEFT

MICRO BUCKLE - MB109
STRAP - 110mm RND

- T-NUT SCREW M4X6 PHIL PAN (STRAP)
- T-NUT SCREW M4X6 PHIL SHORT PAN (BUCKLE)
- T-NUT M4
- WASHER (STRAP)

- CLEAR TUBING
- CORD 3mm PP (YELLOW)
- WHEEL LOCK
- CORD LOCK

BASIC BARS
and CAPS

CVS WRAP CAP
WRAP CAP SHIM SET

SMALL BAR
XS-M
LARGE BAR
L-XXL

VISION HEEL WEDGE

VISION ARCH

VISION HEEL
XS-S, M-XXL

VISION PLATE INFILL

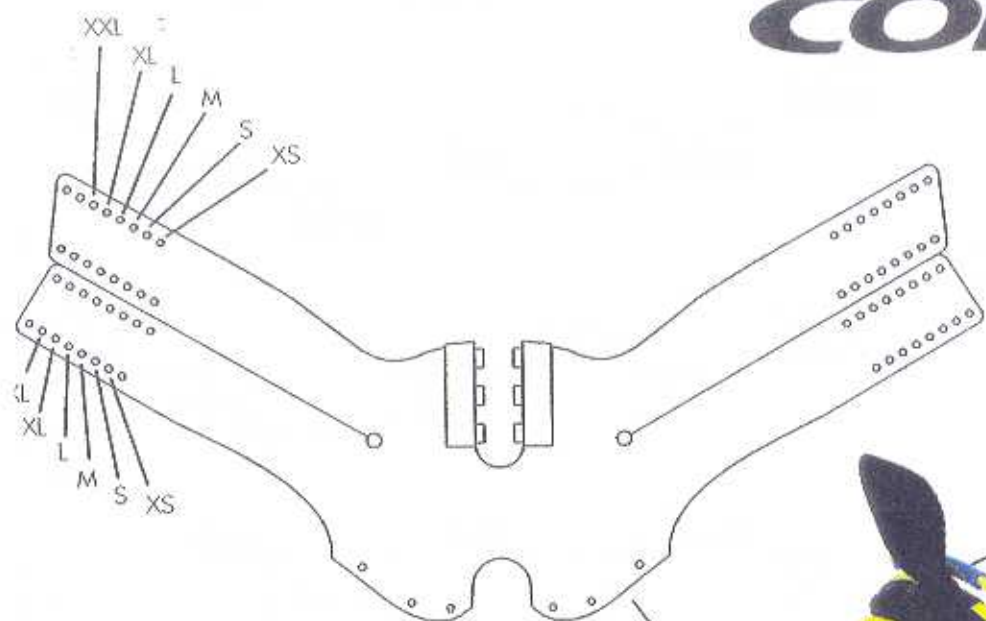
VISION FRONT PLATE
XS, S-XXL

FRONT PAD
XS-M, L-XXL

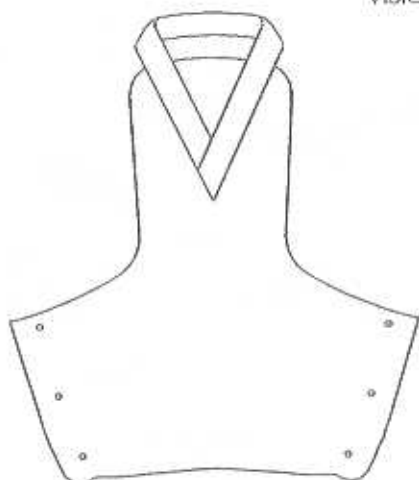
VISION FRONT TOE
XS, S, M, L, XL-XXL

- SCREW #8X5/8" PHIL PAN (WRAP CAPS)
- SCREW #8X3/4" PHIL FLAT (BASIC BARS)

VISION REAR



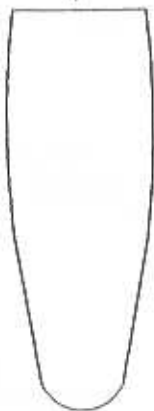
VISION FRONT WRAP
ALL SIZES



VISION REAR TOE
XS, S, M, L, XL-XXL



VISION REAR PLATE
XS, S-XXL

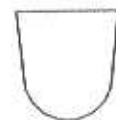


REAR PAD
XS, S-XXL



-  CLEAR TUBING
-  CORD 3mm PP (YELLOW)
-  WHEEL LOCK
-  CORD LOCK

BASIC BARS
and CAPS




VISION HEEL WEDGE

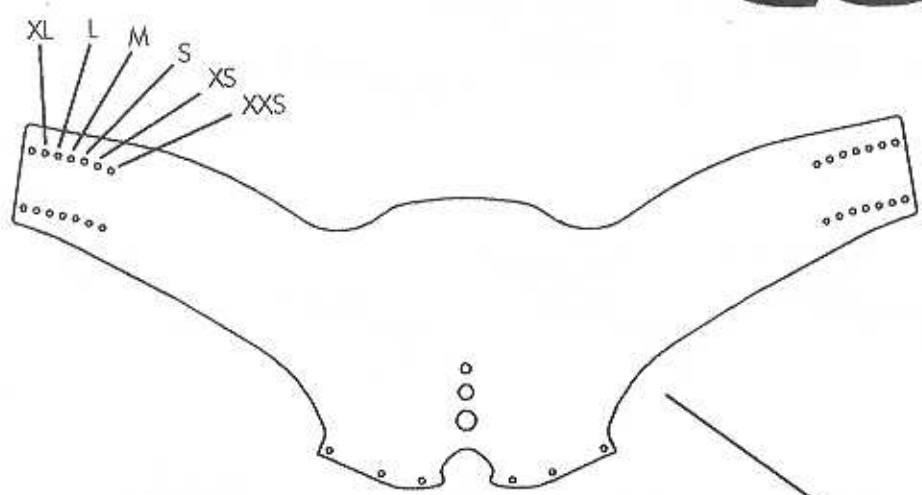
CVS WRAP CAP
WRAP CAP SHIM SET



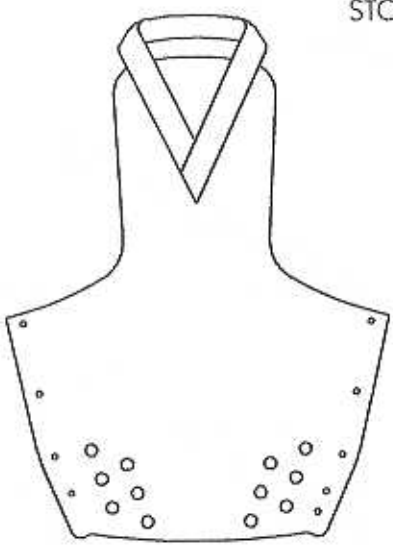
VISION HEEL
XS-S, M-XXL

-  SCREW #8X5/8" PHIL PAN (WRAP CAPS)
- SCREW #8X3/4" PHIL FLAT (BASIC BARS)

STOKER FRONT



STOKER FRONT WRAP
ALL SIZES



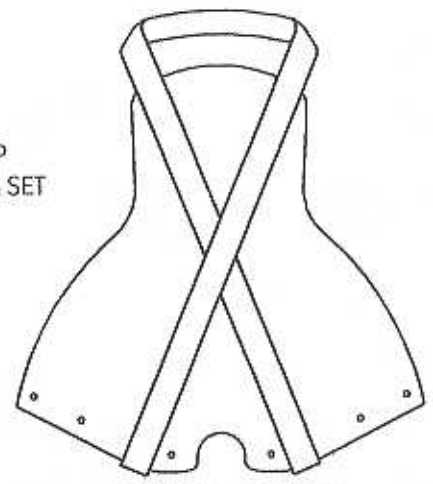
STOKER FRONT TOE
XXS-XS, S, M, L, XL



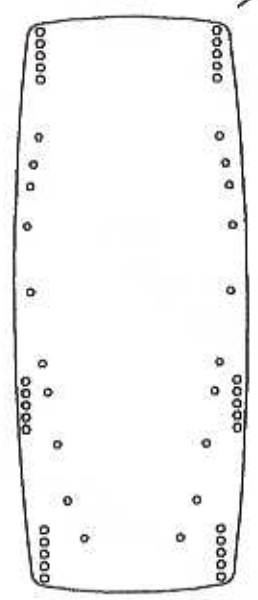
BASIC BARS
and CAPS

SMALL BAR
XXS-M
LARGE BAR
L-XL

CVS WRAP CAP
WRAP CAP SHIM SET



STOKER FRONT HEEL
XXS-S, M-XL



STOKER FRONT PLATE
XXS-XS, S-XXL



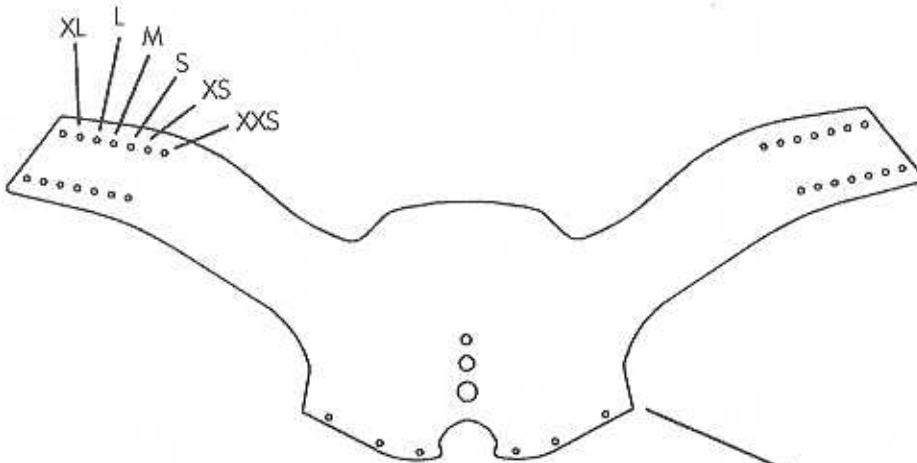
FRONT PAD
XXS-M, L-XL



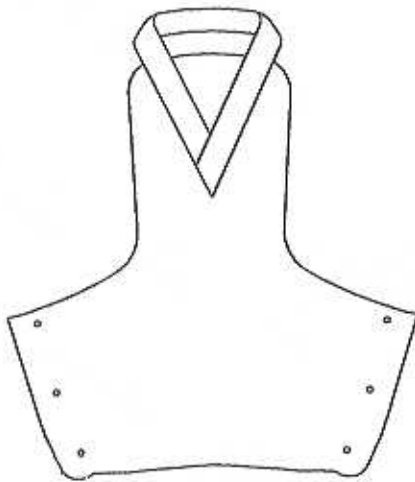
SCREW #8X5/8" PHIL PAN (WRAP CAPS)
SCREW #8X5/8" PHIL FLAT (BASIC BARS)

STOKER

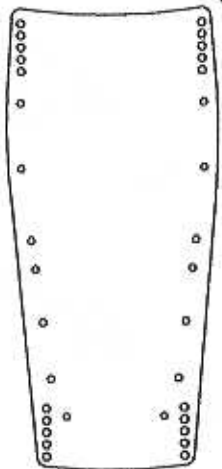
REAR



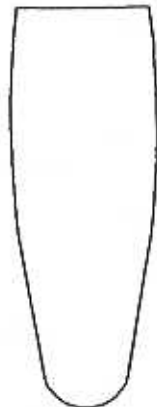
STOKER REAR WRAP
ALL SIZES



STOKER REAR TOE
XXS-XS, S, M, L, XL



STOKER REAR PLATE
XXS-XS, S-XL

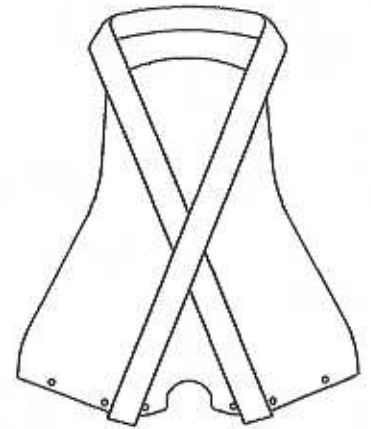


REAR PAD
XXS-XS, S-XL



BASIC BARD
and CAPS

CVS WRAP CAP
WRAP CAP SHIM SET

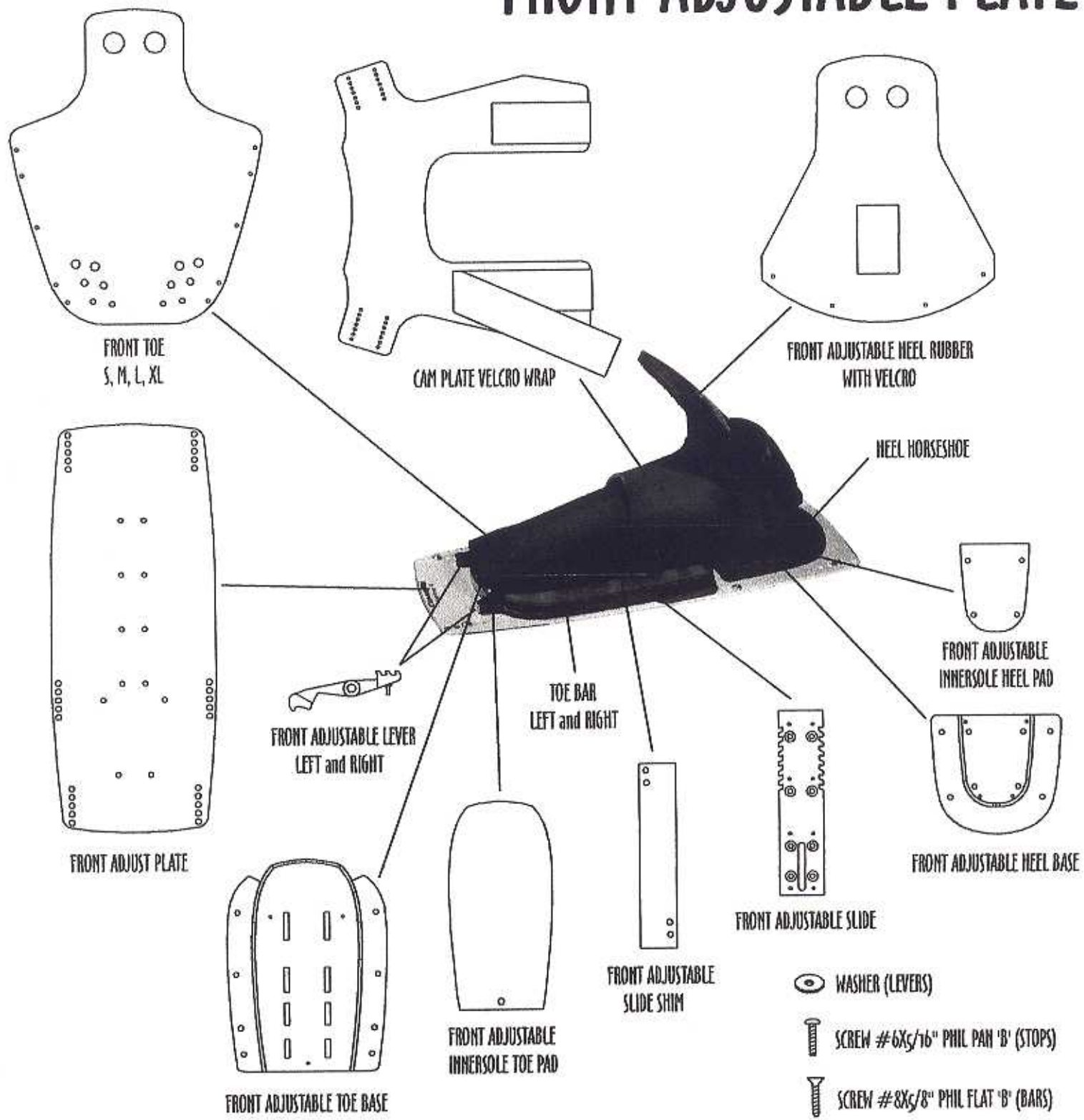







STOKER REAR HEEL
XXS-XS, S-XL




SCREW #8X5/8" PHIL PAN (WRAP CAPS)
SCREW #8X5/8" PHIL FLAT (BASIC BARS)

FRONT ADJUSTABLE PLATE



-  WASHER (LEVERS)
-  SCREW #6X5/16" PHIL PAN 'B' (STOPS)
-  SCREW #8X5/8" PHIL FLAT 'B' (BARS)
-  SCREW #8X3/8" PHIL FLAT (SLIDE/HEEL)
-  SCREW #4X3/8" PHIL FLAT (LEVER)

 SPRING 1/4"X5/8"X.035" SS (LEVER)